

Altantic Consulting - Elevator Consultant
 Lighting Consultant -
 Cline Bettridge Bernstein Lighting Design, Inc.
 Research Facilities Design - Laboratory Consultants
 Simpson Gumpertz and Heger, Inc. - Waterproofing Consultants
 Geconcepts Engineering Inc. - Geotechnical Engineer

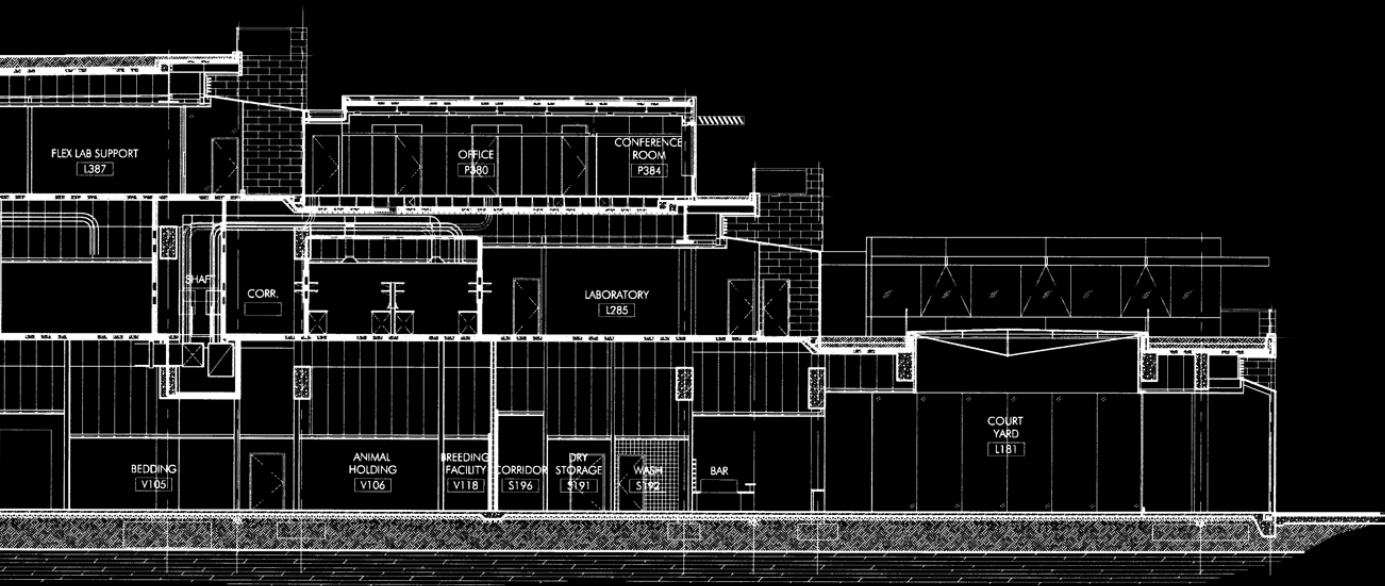
Burt Hill Kosar Rittelman Associates - Mechanical Engineer
 Andropogon Associates - Landscape Planners
 Dewberry and Davis - Civil Engineer
 Gage-Babcock and Associates - Code and Security
 Shen Milson and Wilke - Audio-Visual, Telecommunications, Acoustical
 Cini-Little International, Inc. - Food Service

Howard Hughes Medical Institute - Owner
 Mark Winkler Company - Owner's Representative
 Jacob Facilities, Inc. - Project Manager
 Rafael Vinoly Architects - Architect
 Turner Construction Company - Construction Manager
 Thornton Tomasetti Engineers - Structural Engineer



www.hhmi.org

Rafael Vinoly Architect Rafael Vinoly Jay Bargmann Charles Blomberg Robert Steel Ming Hui Bon Hoa Nancy Yuen
 David Hodge Benjamin Reich Ghazal Abbasy Rob Lopez Dereje Desta George Salinas Mareika Kardum Ed McMahon
 Harry Bolick Jim Herr Jim Kirkpatrick Ellen Dauherty Elio Felix Elaine Yau Cheick Koma Cecilia Arca Carolyn
 Hill Carlos Soubie Andres Remy Ahmed Zaidan Peter Coe George Sorial Steve Moon Kostantin Udilovich Kevin
 Kieyla Karan Ahamad Stephanie Goto Priya Sambasivam Shigeru Kotoda Hsiao-Tsuei Huang Tse Hsin Wu Takeshi
 Miyakawa Ryohei Saito Takehiko Tokue Fred Wilmers Matt Young Linda Kohlman John Young



Section through Laboratory Building

2002-03

**HOWARD HUGHES
 MEDICAL INSTITUTE
 Janelia Farm
 Research Campus**

Ashburn, VA

The Janelia Farm Research Campus houses a world-class research center where scientists from many disciplines gather to collaborate closely, in small teams, on some of science's most challenging problems. The Janelia Farm complex includes a large laboratory building, conference facilities, and housing, all designed to blend into the natural surroundings of the site. The planning for both the scientific program and the campus facilities was intertwined, with each part overlapping and influencing the other.

The architectural designs of the buildings and the laboratories are aimed at achieving Janelia Farm's central objectives—collaboration and flexibility. All aspects of the Janelia Farm Research Campus—the programs, the people, the design of the buildings, and infrastructure—are designed to stimulate multidisciplinary, team-driven biomedical research.

The campus occupies 689 wooded acres along the Potomac River, featuring lab space and housing facilities with distinctive landscape architecture.

Up to 250 resident staff include 24 group leaders and as many as 20 fellows, as well as the postdocs and graduate students in their research groups. A support staff of 80 provides the necessary infrastructure for efficient research.

www.hhmi.org